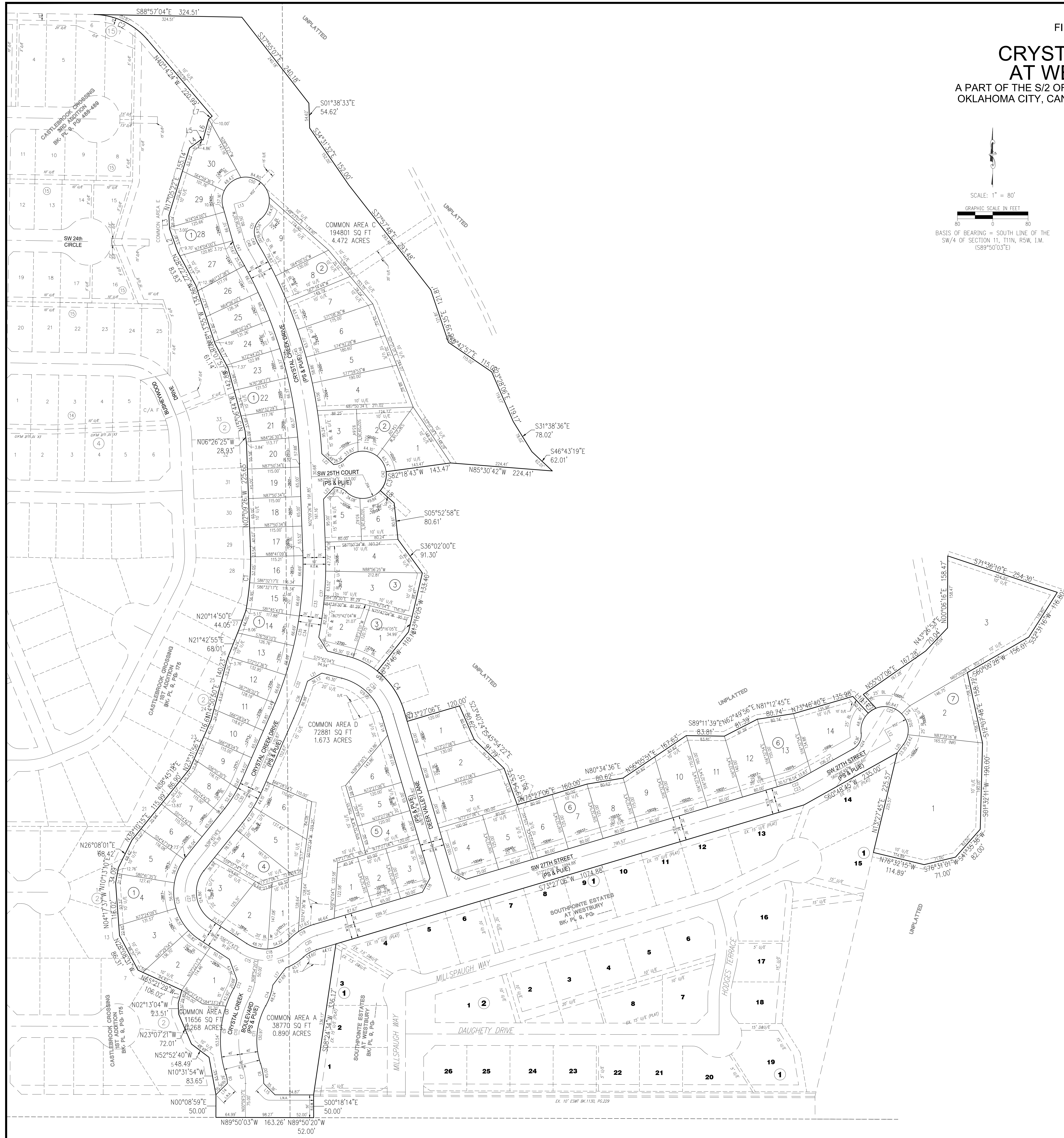
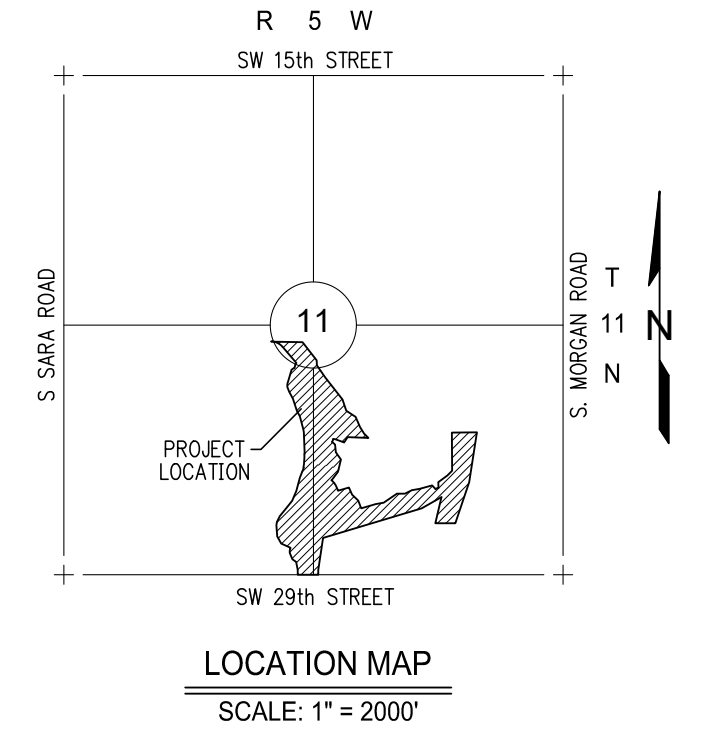
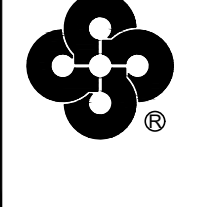


FINAL PLAT
OF
**CRYSTAL CREEK
AT WESTBURY**
A PART OF THE S/2 OF SECTION 11, T11N, R5W, I.M.
OKLAHOMA CITY, CANADIAN COUNTY, OKLAHOMA

SCALE: 1" = 80'
GRAPHIC SCALE IN FEET
BASIS OF BEARING = SOUTH LINE OF THE
SW/4 OF SECTION 11, T11N, R5W, I.M.
(S89°50'03"E)



CRYSTAL CREEK AT WESTBURY	
333 Parke Parkway Blvd Tulsa, Oklahoma 74399	
 Crafton Tull architectural engineering planning	SHEET NO.: 1 of 1
405.787.4270 405.787.4274 www.craftontull.com	DATE: 04/13/17
SEVERAL OF AUTHORITIES CANNOT BE REPRODUCED	PROJECT NO.: 15601100